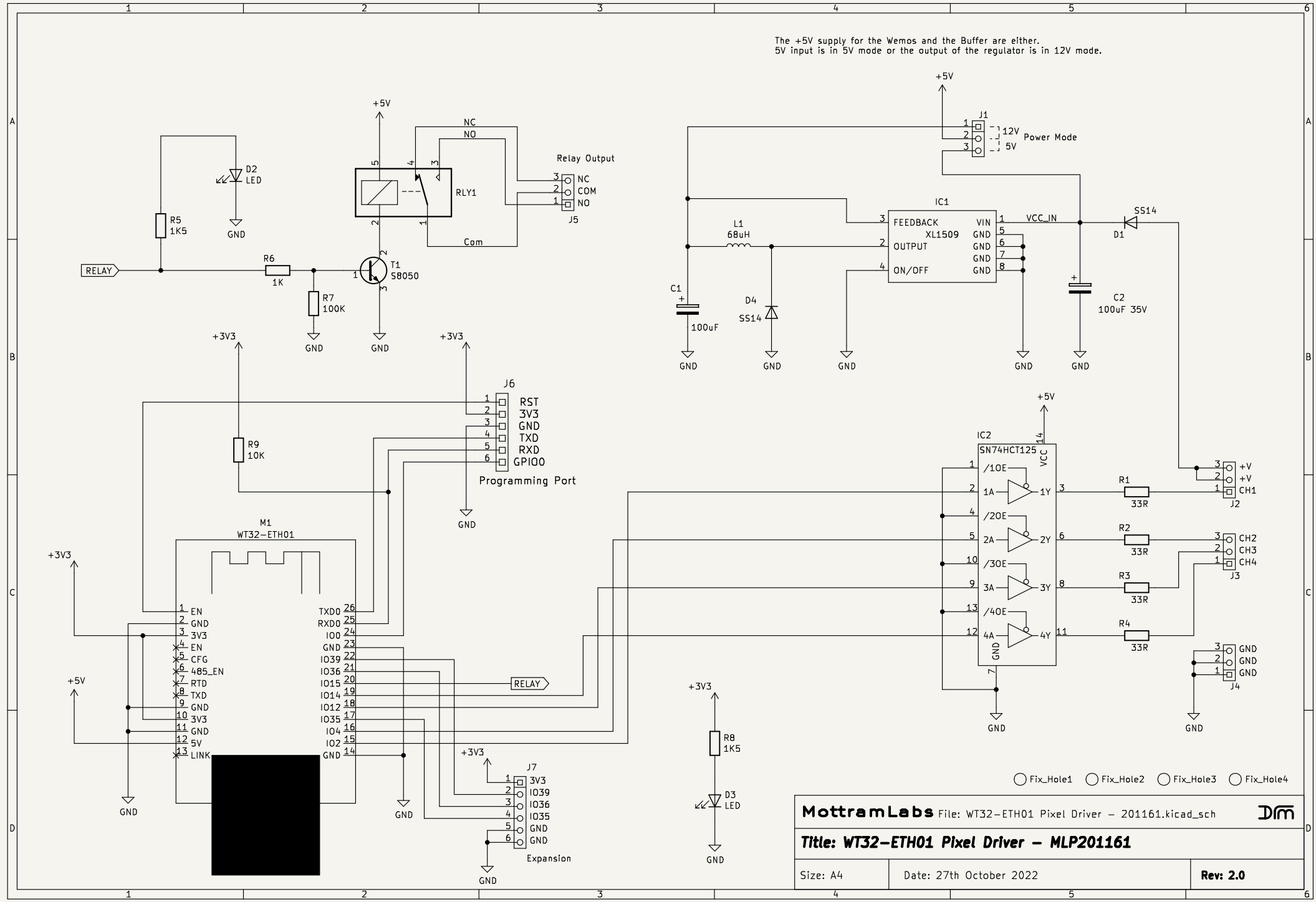


The +5V supply for the Wemos and the Buffer are either.
5V input is in 5V mode or the output of the regulator is in 12V mode.



○ Fix_Hole1 ○ Fix_Hole2 ○ Fix_Hole3 ○ Fix_Hole4

MottramLabs File: WT32-ETH01 Pixel Driver - 201161.kicad_sch DM	
Title: WT32-ETH01 Pixel Driver - MLP201161	
Size: A4	Date: 27th October 2022
Rev: 2.0	