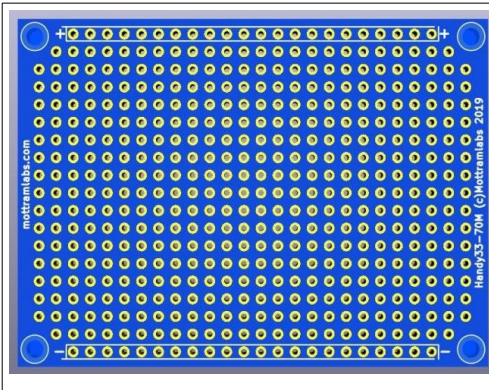
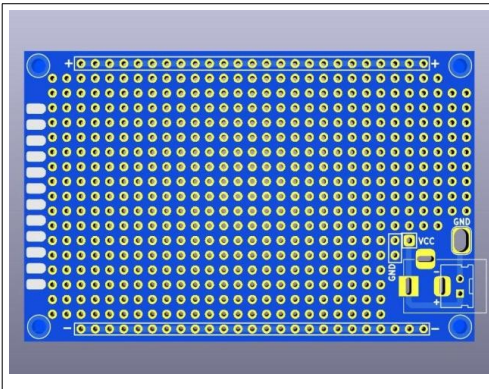


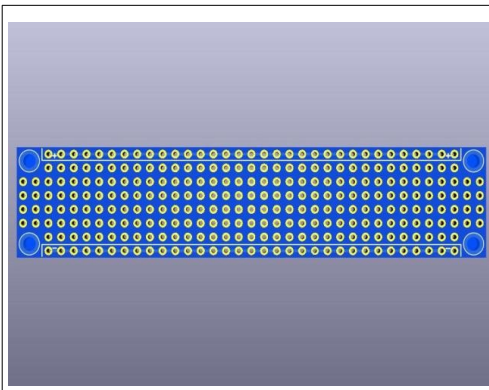
<b>Product ID:</b>	<b>MLP191033</b>
<b>Item:</b>	70mm Prototype PCB – Matrix Type
<b>Description:</b>	Matrix Board With Bus Bars
<b>Holes:</b>	438off Ø 0.8mm. Plus 2 Bus Bars (+/-)
<b>Size:</b>	70mm x 50mm (12g)
<b>Mounting:</b>	4 Holes Ø 2.5mm. 65mm x 45mm
<b>Colour:</b>	Blue With White Text



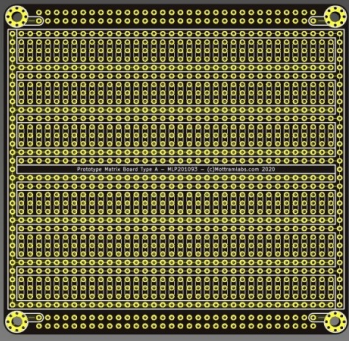
<b>Product ID:</b>	<b>MLP191060</b>
<b>Item:</b>	80mm Prototype PCB – Matrix Type
<b>Description:</b>	Matrix Board With Bus Bars
<b>Holes:</b>	506off Ø 0.8mm. Plus 2 Bus Bars (+/-)
<b>Size:</b>	80mm x 50mm (13g)
<b>Mounting:</b>	4 Holes Ø 2.5mm. 75mm x 45mm
<b>Colour:</b>	Blue With White Text



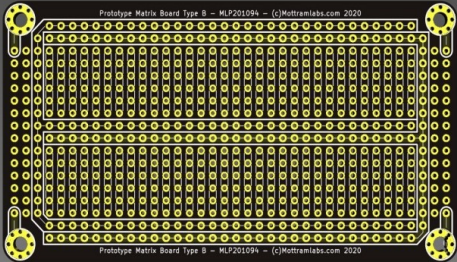
<b>Product ID:</b>	<b>MLP191063</b>
<b>Item:</b>	80mm Prototype PCB – Matrix Type
<b>Description:</b>	Matrix Board With Bus Bars & Jack Skt
<b>Holes:</b>	470off Ø 0.8mm. Plus 2 Bus Bars (+/-)
<b>Size:</b>	80mm x 50mm (20g)
<b>Mounting:</b>	4 Holes Ø 2.5mm. 75mm x 45mm
<b>Colour:</b>	Blue With White Text



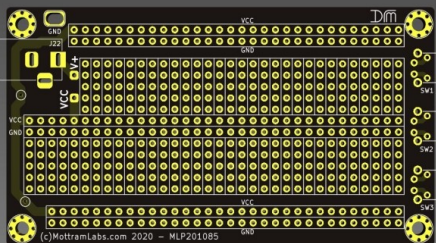
<b>Product ID:</b>	<b>MLP191034</b>
<b>Item:</b>	94mm Prototype PCB – Matrix Type
<b>Description:</b>	Matrix Board With Bus Bars
<b>Holes:</b>	214off Ø 0.8mm. Plus 2 Bus Bars (+/-)
<b>Size:</b>	94mm x 20.3mm (7g)
<b>Mounting:</b>	4 Holes Ø 2.5mm. 89mm x 15.2mm
<b>Colour:</b>	Blue With White Text



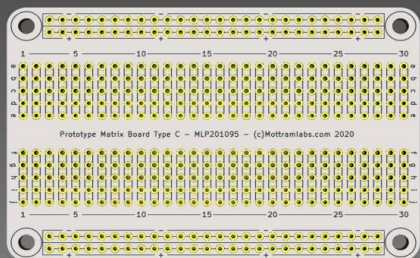
<b>Product ID:</b>	<b>MLP201093</b>
<b>Item:</b>	99mm Prototype PCB – Strip Type A
<b>Description:</b>	Strip Board With Bus Bars
<b>Holes:</b>	776off Ø 0.8mm. Plus 2 Bus Bars (+/-)
<b>Size:</b>	99mm x 99mm (31g)
<b>Mounting:</b>	4 Holes Ø 3mm. 91.4mm x 91.4mm
<b>Colour:</b>	Black With White Text



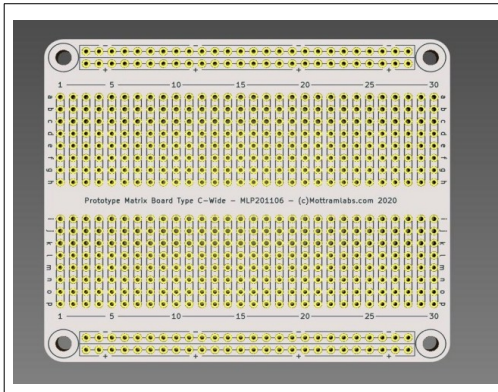
<b>Product ID:</b>	<b>MLP201094</b>
<b>Item:</b>	99mm Prototype PCB – Strip Type B
<b>Description:</b>	Strip Board With Bus Bars
<b>Holes:</b>	440off Ø 0.8mm. Plus 2 Bus Bars (+/-)
<b>Size:</b>	99mm x 53.3mm (17g)
<b>Mounting:</b>	4 Holes Ø 3mm. 91.4mm x 45.7mm
<b>Colour:</b>	Black With White Text



<b>Product ID:</b>	<b>MLP201085</b>
<b>Item:</b>	97mm Prototype PCB – Strip Type
<b>Description:</b>	Strip Board + Bus Bars, Jack & Buttons
<b>Holes:</b>	315off Ø 0.8mm. Plus 4 Bus Bars (+/-)
<b>Size:</b>	97.2mm x 53.3mm (20g)
<b>Mounting:</b>	4 Holes Ø 3mm. 90.1mm x 45.7mm
<b>Colour:</b>	Black With White Text



<b>Product ID:</b>	<b>MLP201095</b>
<b>Item:</b>	80mm Prototype PCB – Strip Type C
<b>Description:</b>	Strip Board With Bus Bars
<b>Holes:</b>	300off Ø 0.8mm. Plus 4 Bus Bars (+/-)
<b>Size:</b>	80mm x 52mm (17g)
<b>Mounting:</b>	4 Holes Ø 3mm. 72.4mm x 44.5mm
<b>Colour:</b>	White With Black Text



<b>Product ID:</b>	<b>MLP201106</b>
<b>Item:</b>	80mm Prototype PCB – Type C Wide
<b>Description:</b>	Strip Board With Bus Bars
<b>Holes:</b>	480off Ø 0.8mm. Plus 4 Bus Bars (+/-)
<b>Size:</b>	80mm x 67.3mm (17g)
<b>Mounting:</b>	4 Holes Ø 3mm. 72.4mm x 44.5mm
<b>Colour:</b>	White With Black Text