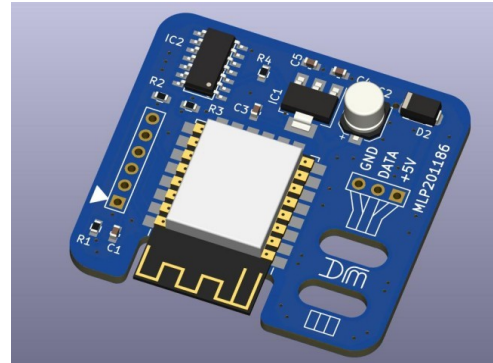


### ESP8266 LED Pixel (WS2812) Driver Board - MLP201186

#### Features and Benefits

- Pre-installed WLED
- Small size
- 5V Operation
- Data Output to WS2812
- Reverse Polarity Protection, PCB only
- Pre-fitted 3-Way Cable For LED Strips



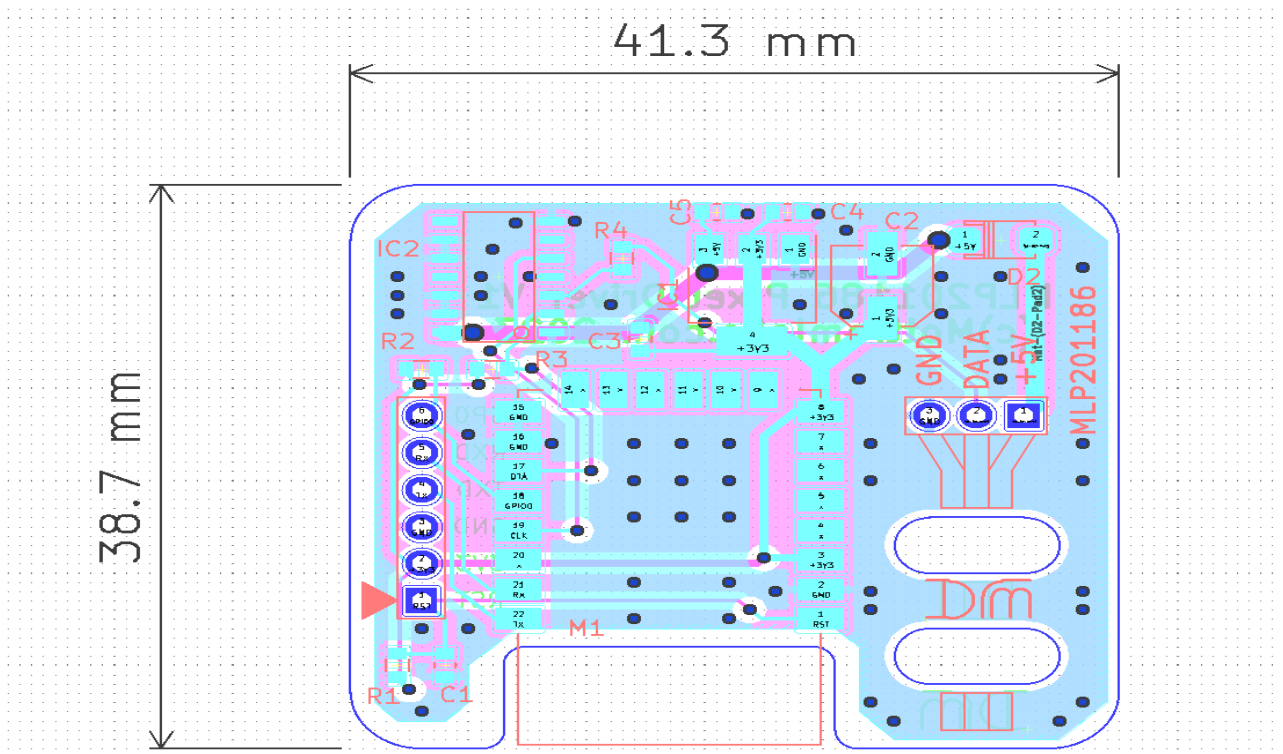
#### Product Details

The MLP201186 provides a simple solution for connecting WS2812 or similar LED pixel strips to the popular WLED firmware and ESP8266 Wi-Fi module. An on-board 74HCT125 line driver provides a 5V P/P output from the normal 3.3V output supplied by the ESP8266 chip.

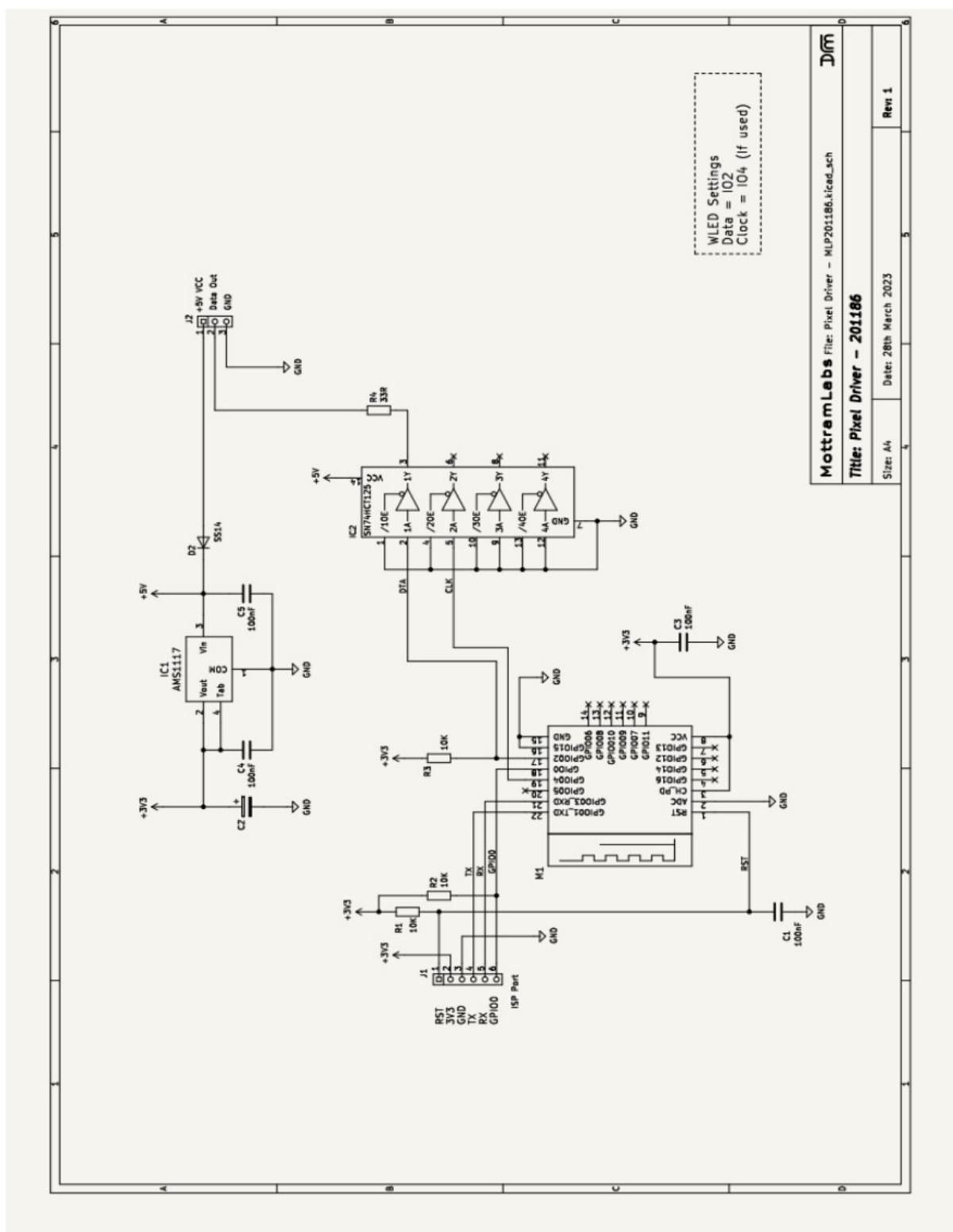
The board provides reverse polarity protection for the PCB only, care should be taken to protect the LED strip. The board can be only be used with 5V LED strips.

#### WLED Settings

WiFi AP Name:	WLED-AP
Browser Address:	4.3.2.1
Password:	wled1234
Data:	GPIO2



MLP201186 - Schematic



**MottramLabs** File: Pixel Driver - MLP201186.kicad\_sch  
**Title: Pixel Driver - 201186**  
Size: A4 Date: 28th March 2023  
Rev 1

## Software – WLED

Although the board can work with a range of software one of the most popular and feature rich is WLED.

### Flashing Tool

**ESPHome-Flasher is a python utility for programming the Wemos D1 Mini**

<https://github.com/esphome/ESPHome-Flasher>

---

### WLED

**WLED Github Page**

<https://github.com/Aircoookie/WLED>

**WLED Releases**

<https://github.com/Aircoookie/WLED/releases>

**WLED Web Installer Tool**

<https://install.wled.me/>

---