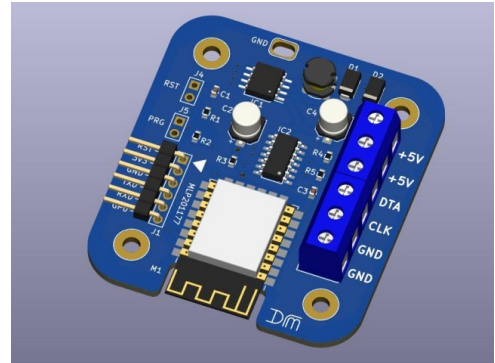


ESP8266 LED Pixel (WS2812) Driver Board - MLP201177

Features and Benefits

- Pre-installed WLED
- Small size
- 5V Operation
- 2off 5V Data Outputs to WS2812
- Reverse Polarity Protection, PCB only
- Screw terminal connections



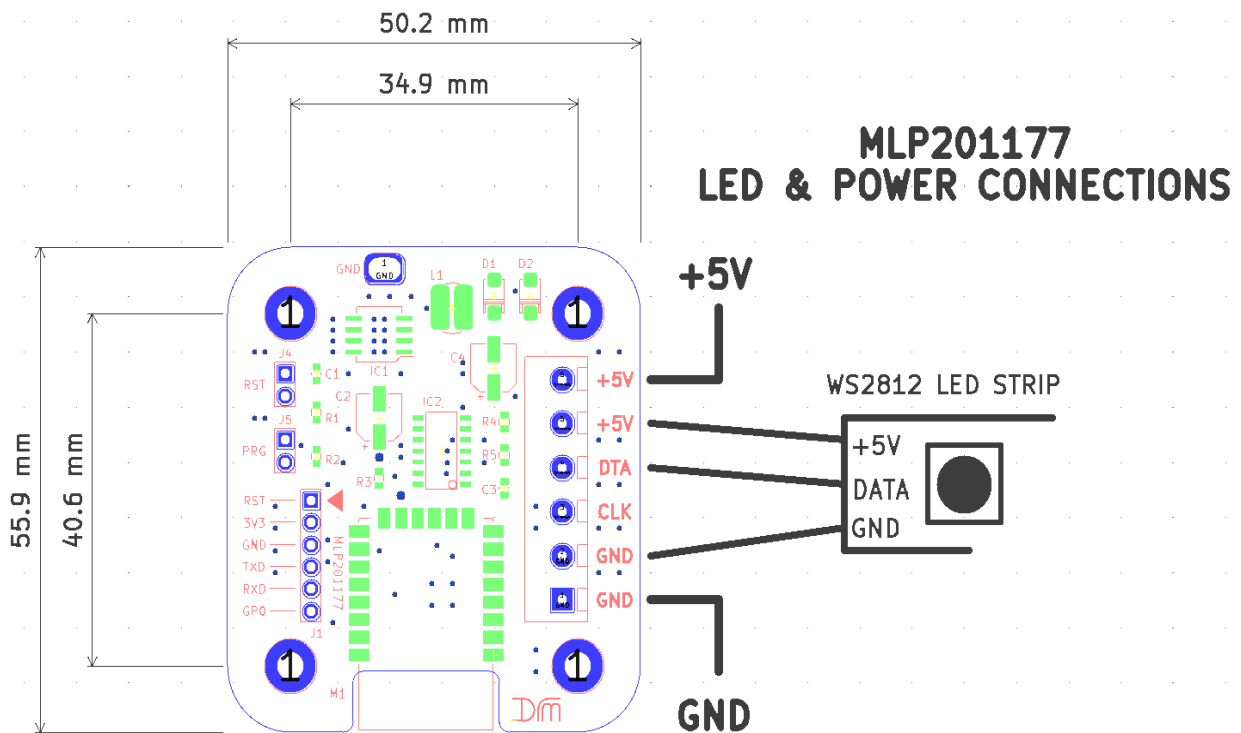
Product Details

The MLP201177 provides a simple solution for connecting WS2812 or similar LED pixel strips to the popular WLED firmware and ESP8266 Wi-Fi module. An on-board 74HCT125 line driver provides a 5V P/P output from the normal 3.3V output supplied by the ESP8266 chip.

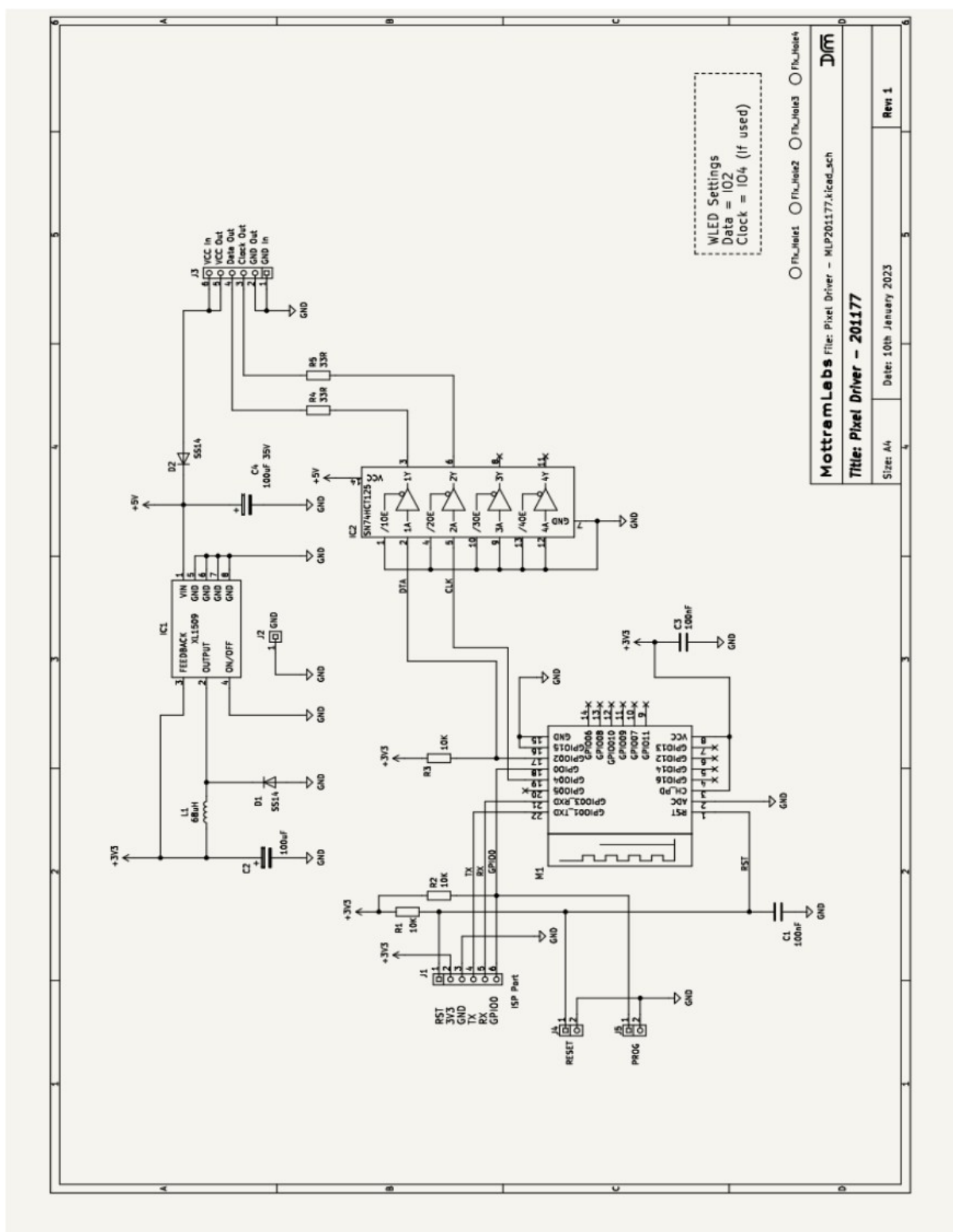
The board provides reverse polarity protection for the PCB only, care should be taken to protect the LED strip. The board can be only be used with 5V LED strips.

WLED Settings

WiFi AP Name:	WLED-AP
Browser Address:	4.3.2.1
Password:	wled1234
Data:	GPIO2
Clock:	GPIO4



MLP201177 - Schematic



Pin1led1 Pin1led2 Pin1led3 Pin1led4
MottramLabs File: Pixel Driver - MLP201177.kicad_sch
Title: Pixel Driver - 201177
 Size: A4 Date: 10th January 2023 Rev 1

Software – WLED

Although the board can work with a range of software one of the most popular and feature rich is WLED.

Flashing Tool

ESPHome-Flasher is a python utility for programming the Wemos D1 Mini

<https://github.com/esphome/ESPHome-Flasher>

WLED

WLED Github Page

<https://github.com/Aircoookie/WLED>

WLED Releases

<https://github.com/Aircoookie/WLED/releases>

WLED Web Installer Tool

<https://install.wled.me/>
