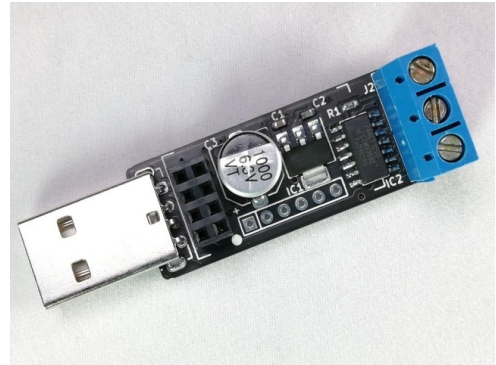


ESP8266 LED Pixel (WS2812) Driver Board - MLP191059

Features and Benefits

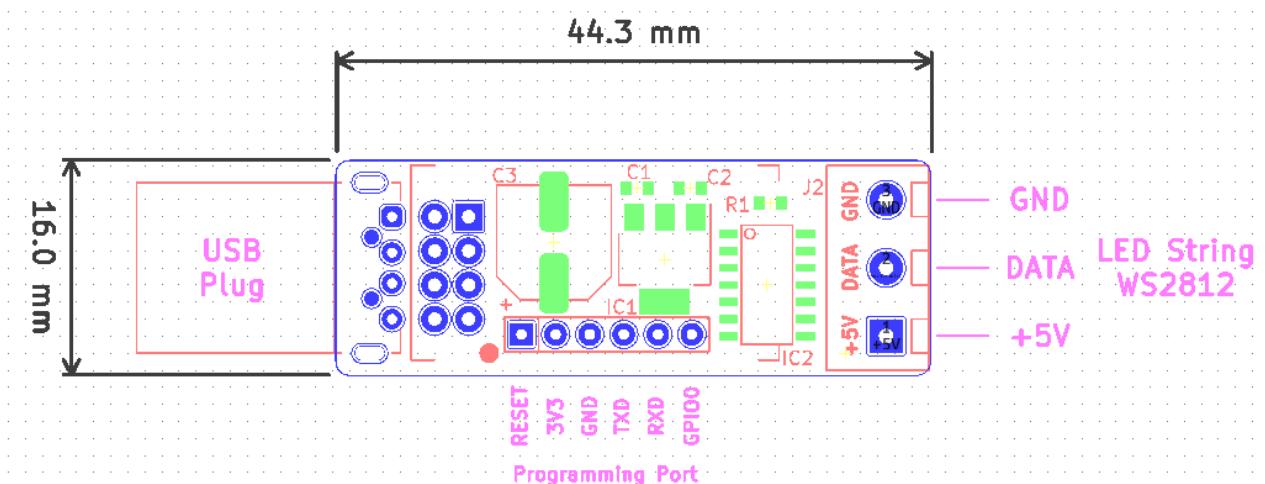
- 5V USB Supply
- Works With ESP-01 Wi-Fi Board
- On-board 3.3V Regulator powers the ESP-01
- 5V data output to LED pixels
- Screw terminal connections



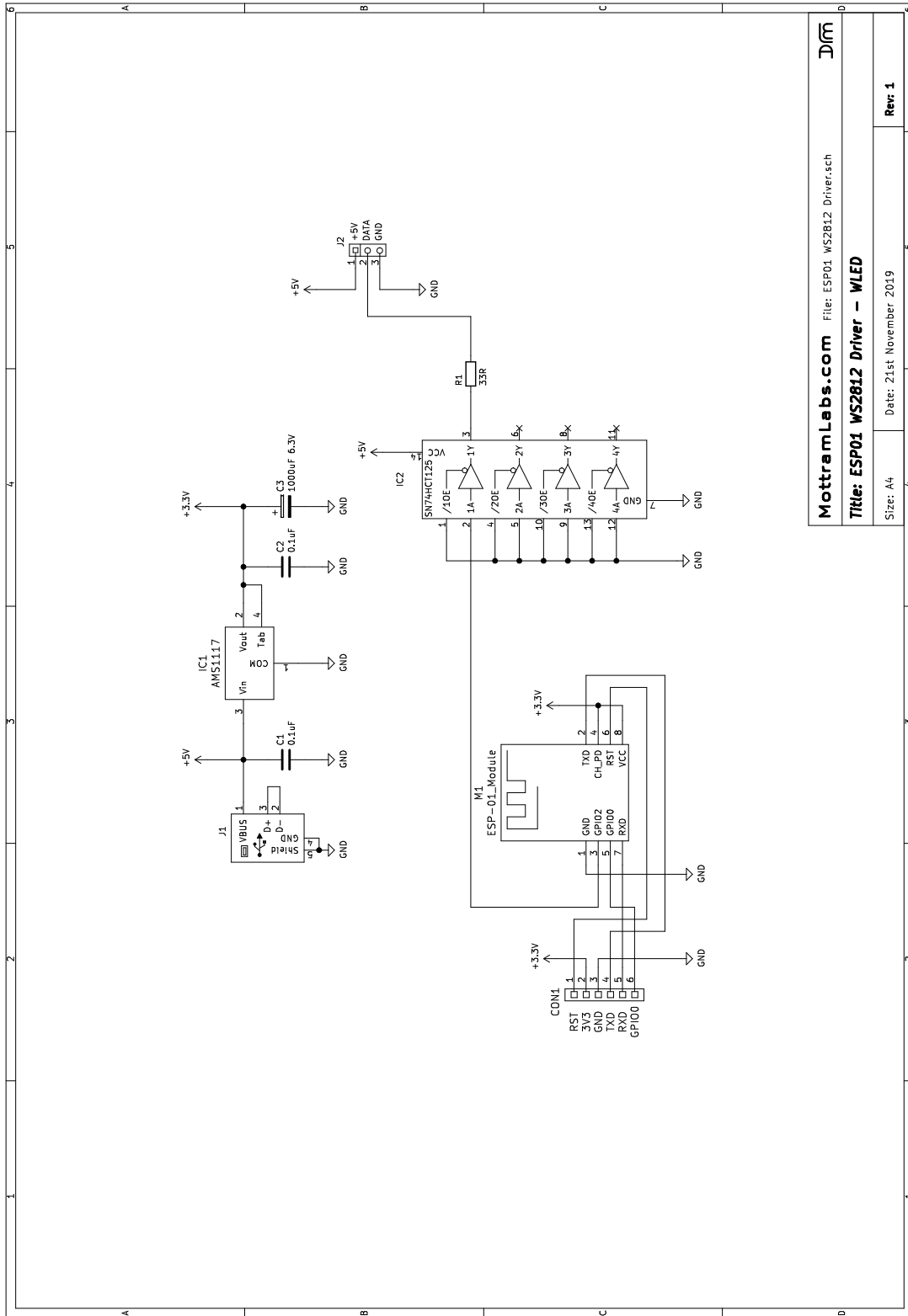
Product Details

The MLP191059 provides a simple solution for connecting WS2812 or similar LED pixel strips to the popular ESP-01 Wi-Fi module. An on-board 74HCT125 line driver provides a 5V P/P output from the normal 3.3V output supplied by the ESP8266 chip as used on the ESP-01.

The board takes power from a USB type A plug and provides the 3.3V required for the ESP-01 module. A 6 pin header is provided for programming the ESP-01. This can be done via a USB to serial interface or our [ESP8266 programmer](#).



MLP191059 - Schematic



Software – WLED

Although the board can work with a range of software one of the most popular and feature rich is WLED. Below are some links to the WLED project page.

Flashing Tool

ESPHome-Flasher is a python utility for programming the Wemos D1 Mini

<https://github.com/esphome/ESPHome-Flasher>

WLED

WLED Github Page

<https://github.com/Aircoookie/WLED>

WLED Releases

<https://github.com/Aircoookie/WLED/releases>

3D Printable Case

A Simple Outdoor Case Design

<https://www.thingiverse.com/thing:4041820>

